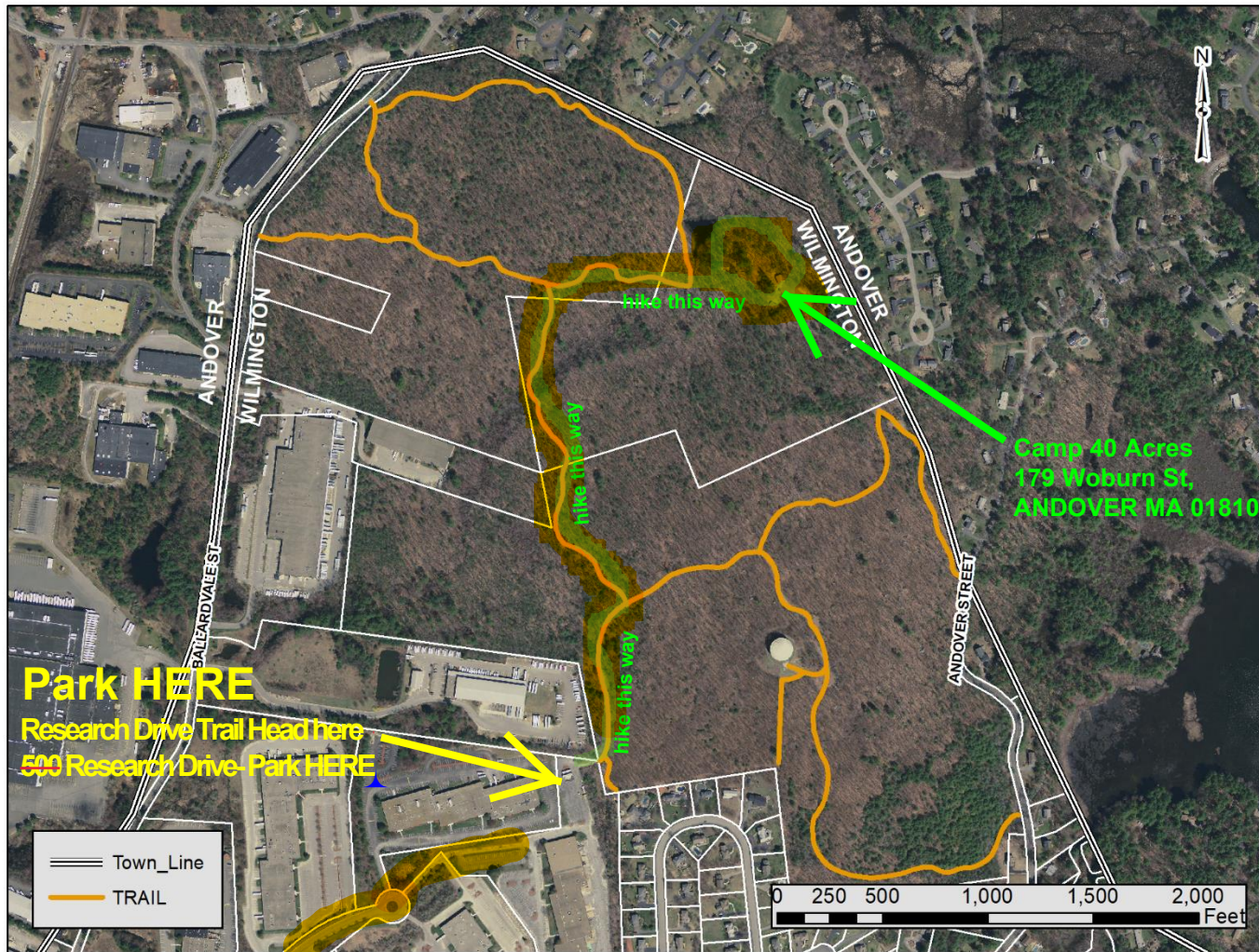


Camp 40 Acres sits within the Wilmington Town Forest. Parking listed below.

WilmingtonTOWN FOREST - Camp40 Acres straddles both Wilmington and Andover

Town of Wilmington, MA // Department of Planning & Conservation // WilmingtonMA.gov // (978) 658-8238



TOWN FOREST

Area: 154 Acres

Activities: Hiking, Nature Observation, Bicycling, Horseback riding, Cross-country skiing, Snowshoeing

Significance: Natural Area

Total Trail Mileage: 2.7 miles

ABOUT THE PROPERTY

Created by a Town Meeting vote in 1975, and transferred to the care, custody, management and control of the Conservation Commission in 1985, the Town Forest is the largest conservation land in Wilmington. It is also one of the few areas of upland protected for passive recreation. The property contains the highest point in town with sweeping views of Boston and surrounding communities. A variety of wildlife inhabit the mixed hardwood forest and the hilltop is an excellent spot for bird watching.

ACCESS & PARKING

Parking and hike in from trail points at NorthEast corner of 500 Research Drive, Wilmington, MA. Research Drive is an office park. The TrailHead is shown on the map and near some Landscaping Equip/Trucks normally parked in back parking lot. This office park is THE trail head listed on the Wilmington Town Website.

The Hike from the Research Drive location to the Camp takes about 15min & is slightly shorter than the hike from the Reading Town Forest Compost Center Entrance to the Main Council Ring. Bring a Flashlight. There will be signs and glowsticks most events